

# 24 Seat Classrooms 130 & 160

## AV System Touch Panel Page Flow

Systems are controlled via 7" touch panels

Upon waking the panel, the start page will appear.

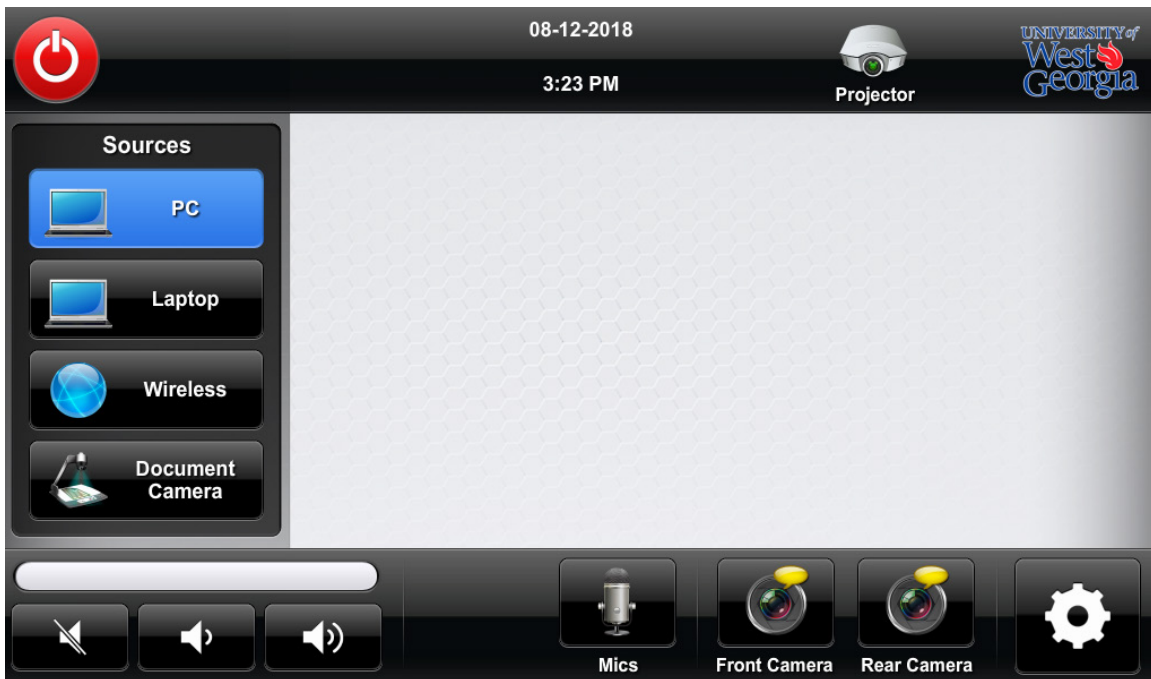
Tap anywhere to begin using the system.



Start Page

Select a source from the left-hand side of the panel.

Control program audio level here.



Main Page

Turn the projector on/off from this page.



Projector Page



PC Page



Laptop Page



Wireless Page



Document Camera Page

Control the lectern and wireless mic from this page.



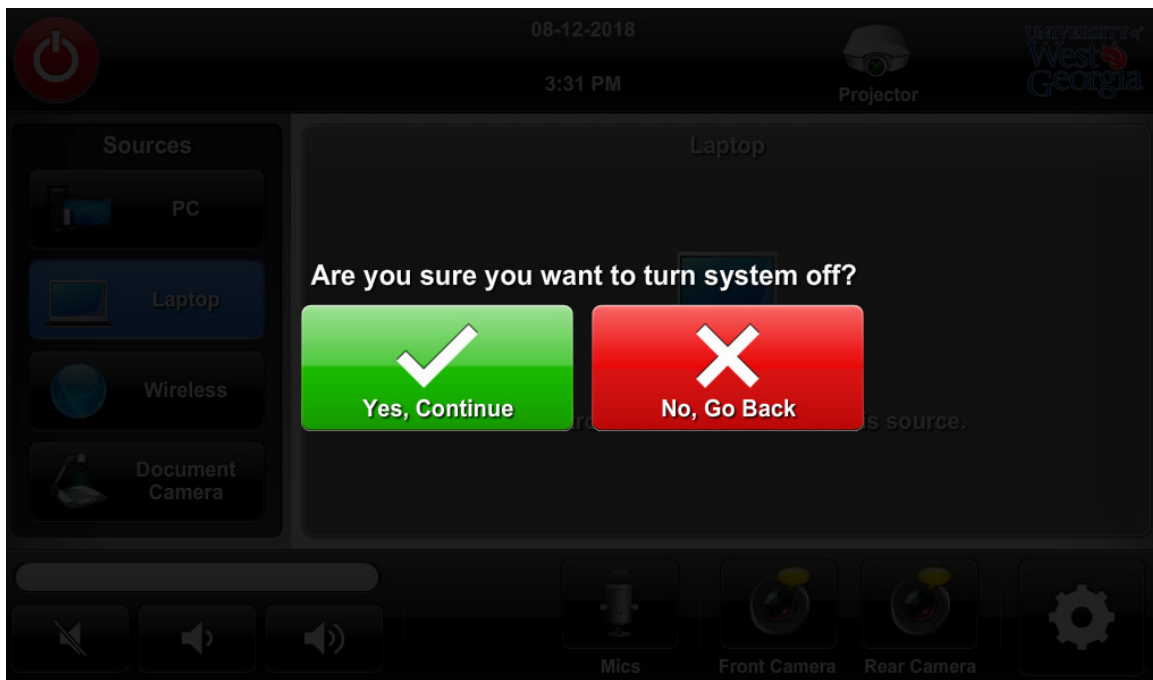
Mics Page

Control the cameras for web conferencing from this page.



\*Front and rear camera pages share functionality.

Camera Page\*



Shutdown Confirmation Page